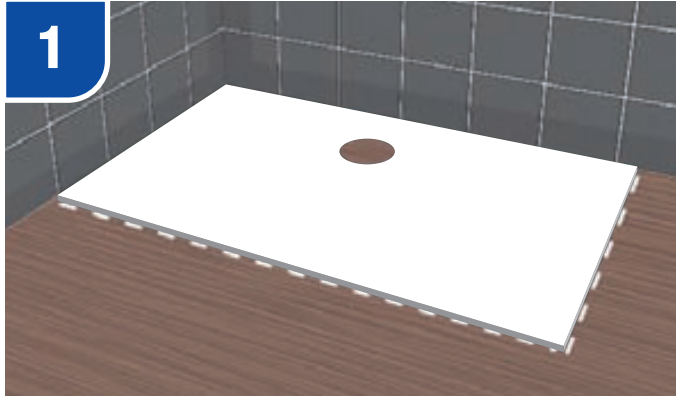
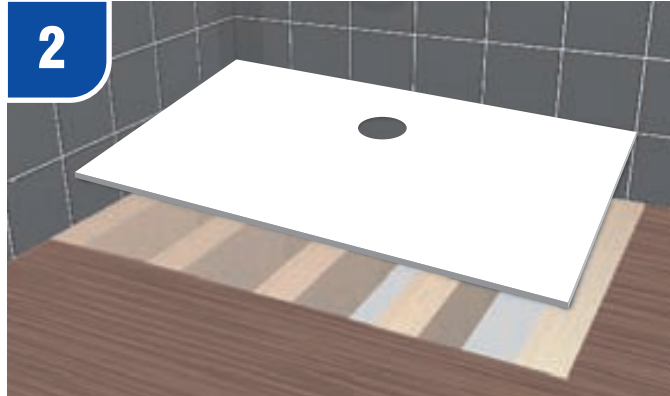


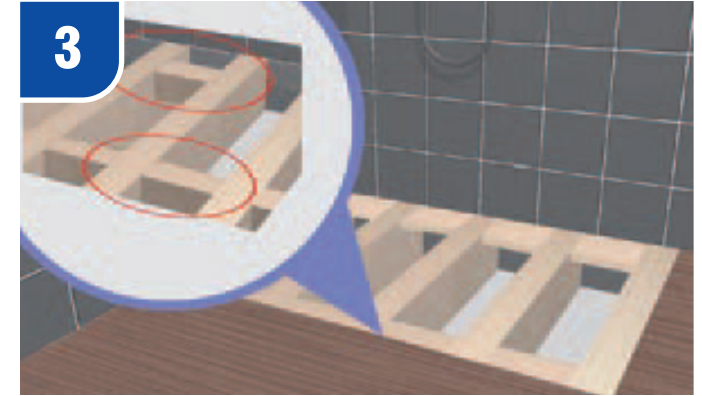
DEC Wooden Floor Fitting Instructions



Locate the DEC in the corner to which it is going to be finally positioned and mark lines around the outer edge.



Remove the floor within the marked area to accept the DEC.
Ensure the joists provide a secure and flat surface to the DEC.
It may be necessary to use packing on the joists to ensure the DEC is level.

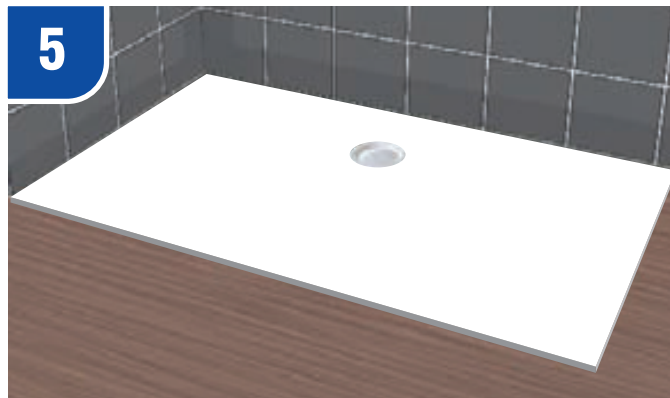


Use noggins to support all edges of the DEC and around the waste position for further support as shown.

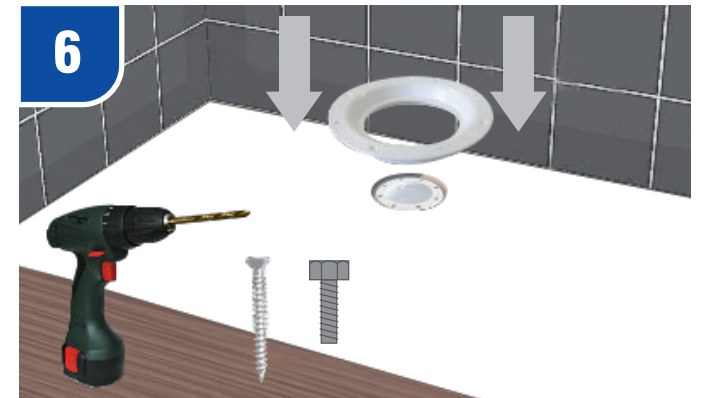
NOTE: Plywood may be required to make the DEC and floor absolutely level in order to apply your floor covering.



Connect the trap body to your outlet pipework, position between joists and centrally beneath the hole in the DEC.



Place the DEC in position.

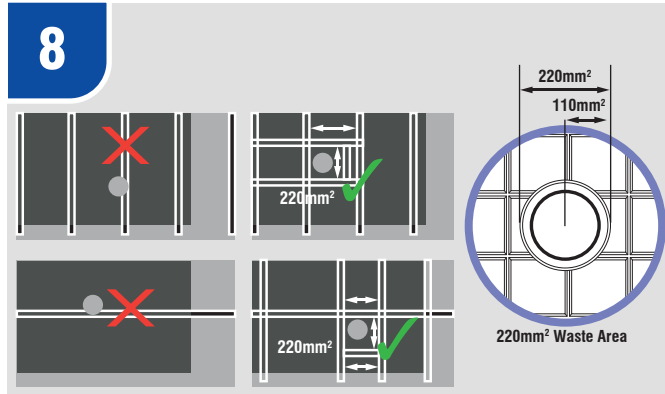


Attach flange to the trap body. Secure flange to the DEC, there are a number of countersunk indentations in the flange to assist with this.

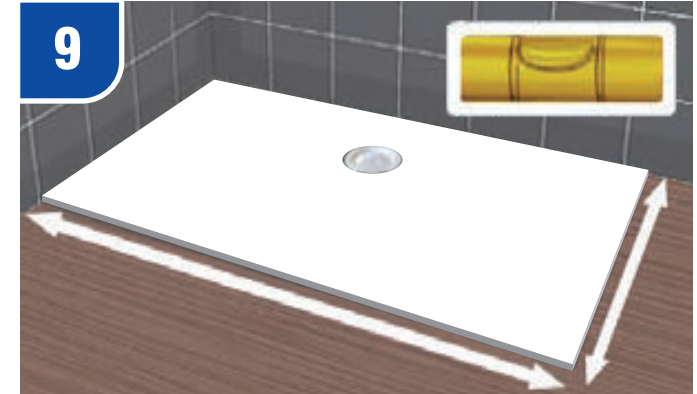
DEC Wooden Floor Fitting Instructions



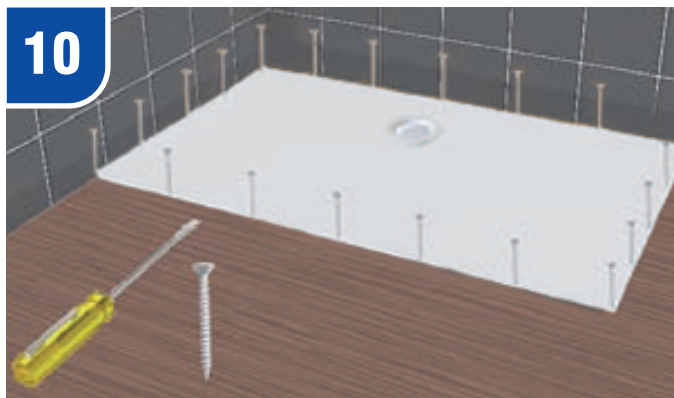
Also ensure that the flange on the trap body is level with, or slightly below the DEC.



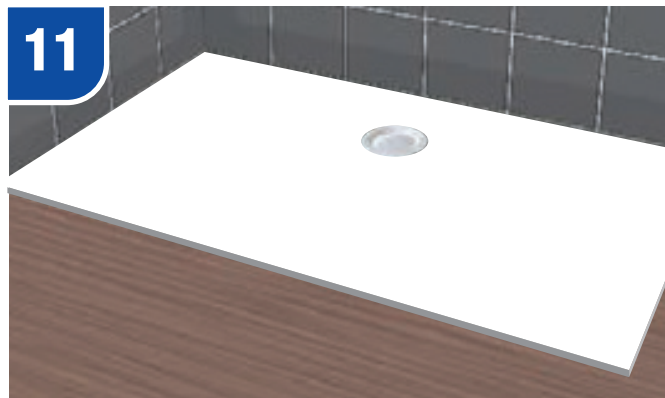
By rotating the DEC by 180° the waste position location can be moved to avoid the joists. The waste area must be fully supported with additional joists within 220mm² from the centre of the waste outlet.



Ensure that the DEC is well supported and completely level.

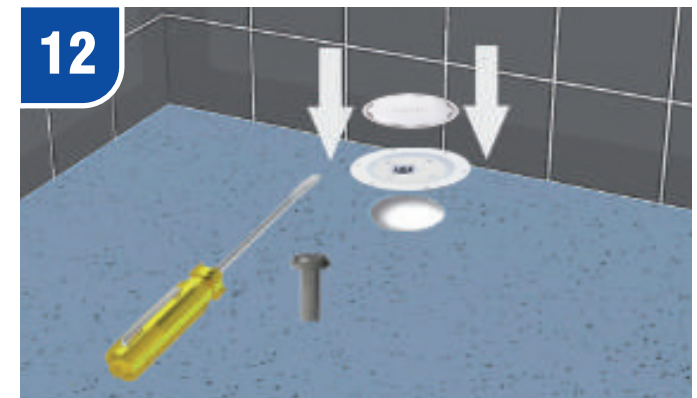


Ensure the DEC is secured along all 4 edges to eliminate any movement.



At this stage you will now be ready to bond into position the relevant coverings and floor coverings.

Note: Bond vinyl sheet flooring to the floor using a 2 part water resistant adhesive. All flooring should be installed in accordance with the manufacturers guidelines.



Once the floor covering is laid, screw into position the traps clamping ring using the bolts provided ensuring the inner cup and dip tube can still be removed. Fit the shower traps push on cover plate.

Note: If fitting a pumped trap follow the above instructions in conjunction with the pump installation instructions.